

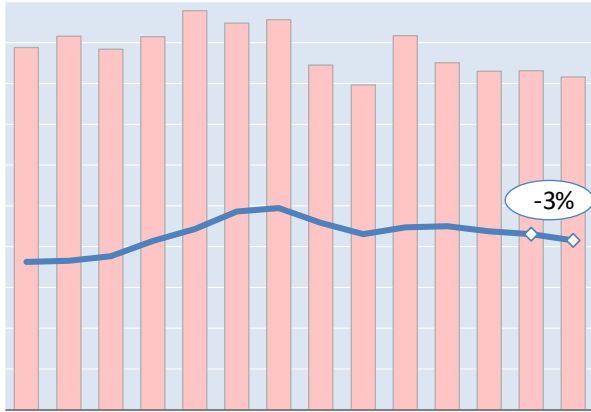
Actual Yields against Volume Development

Latest 14 months

— Actual yield including charges (in USD)

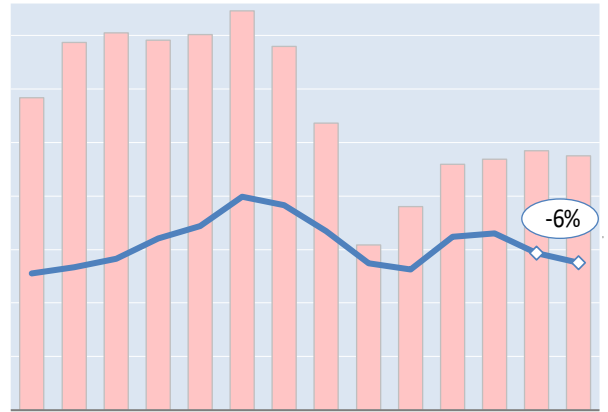
█ Chargeable weight development

Worldwide



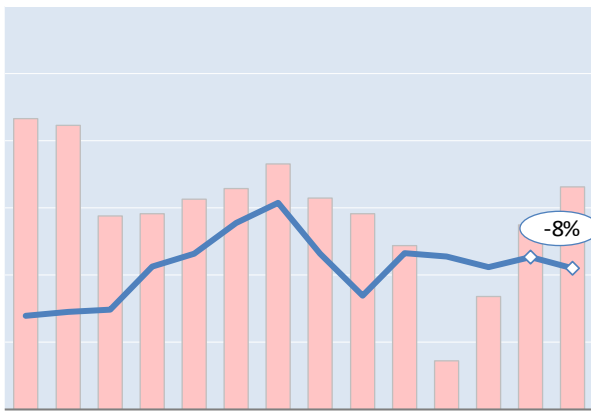
J J A S O N D J F M A M J J  
Jun '21 = \$3.26 Jun '22 = \$3.87 Jul '22 = \$3.74

Hong Kong to USA



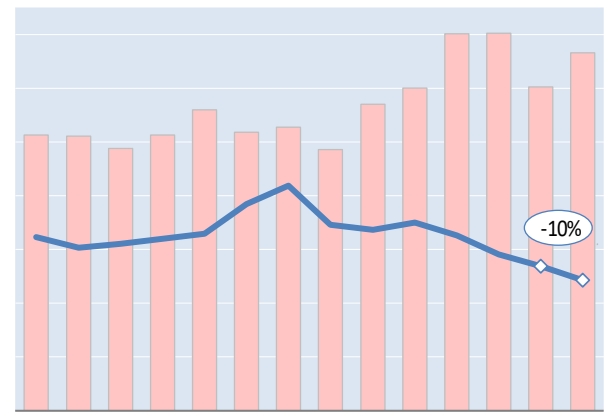
J J A S O N D J F M A M J J  
Jun '21 = \$6.73 Jun '22 = \$7.71 Jul '22 = \$7.24

Shanghai to Germany



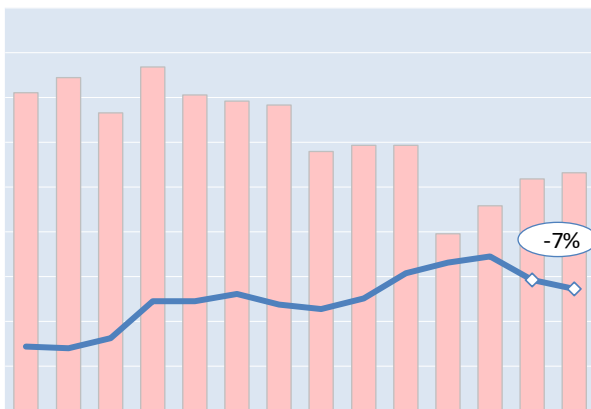
J J A S O N D J F M A M J J  
Jun '21 = \$4.17 Jun '22 = \$6.80 Jul '22 = \$6.29

Amsterdam to USA



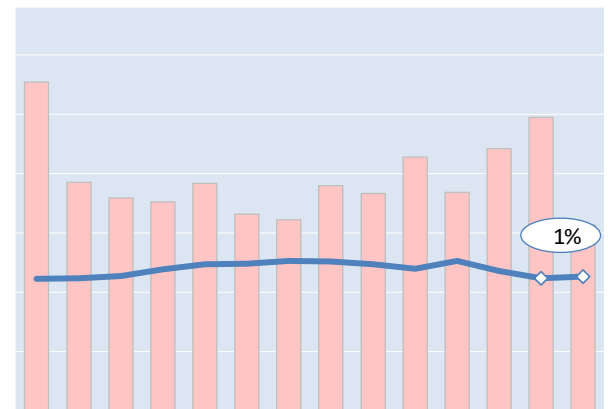
J J A S O N D J F M A M J J  
Jun '21 = \$3.87 Jun '22 = \$3.22 Jul '22 = \$2.91

Frankfurt to China



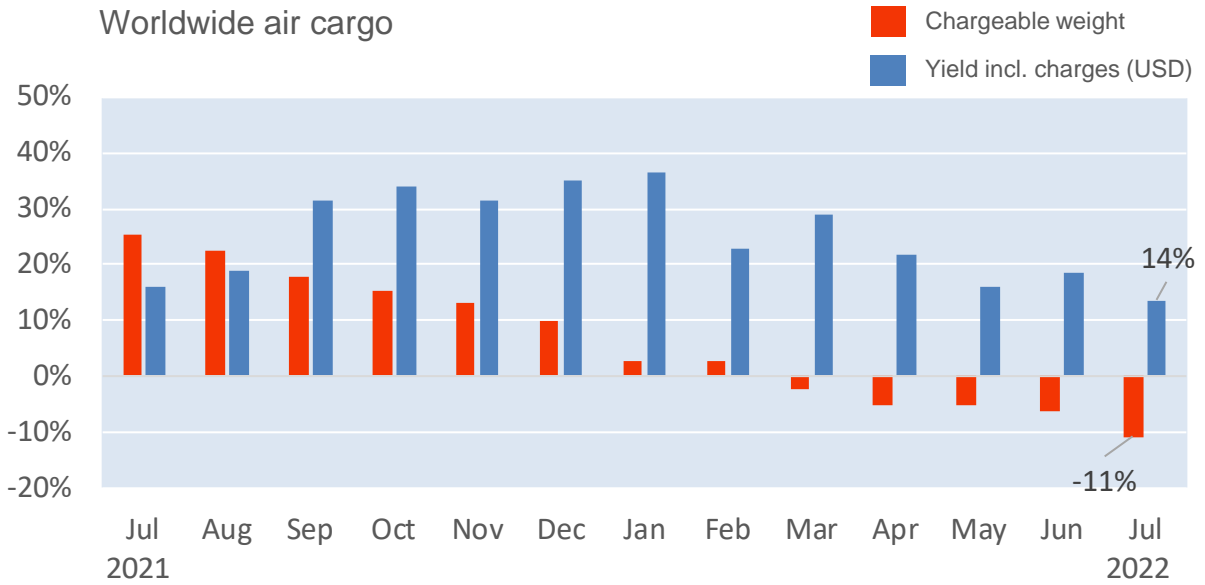
J J A S O N D J F M A M J J  
Jun '21 = \$1.43 Jun '22 = \$2.92 Jul '22 = \$2.72

Mumbai to UK



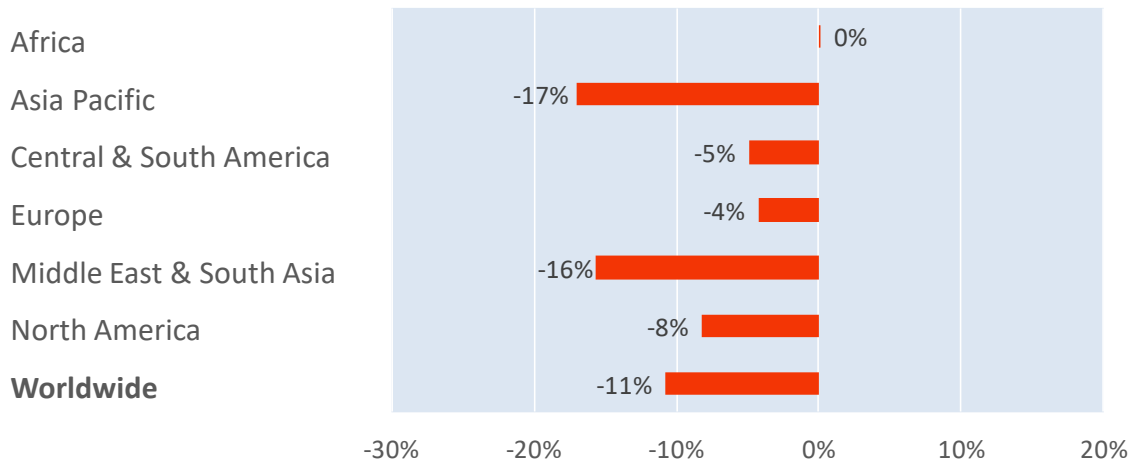
J J A S O N D J F M A M J J  
Jun '21 = \$2.94 Jun '22 = \$2.96 Jul '22 = \$2.99

## Monthly Change Year-on-Year - Weight and Yield



## Monthly Change Year-on-Year – Weight per Origin Region

### Chargeable weight (July 2022)



## Monthly Change Year-on-Year – Weight per Product Category

### Chargeable weight (July 2022)

