

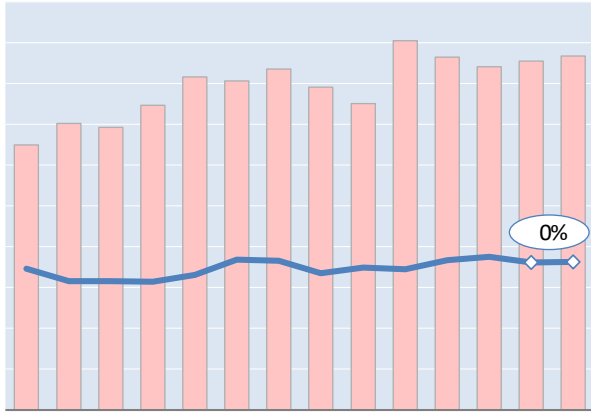
Actual Yields against Volume Development

Latest 14 months

— Actual yield including charges (in USD)

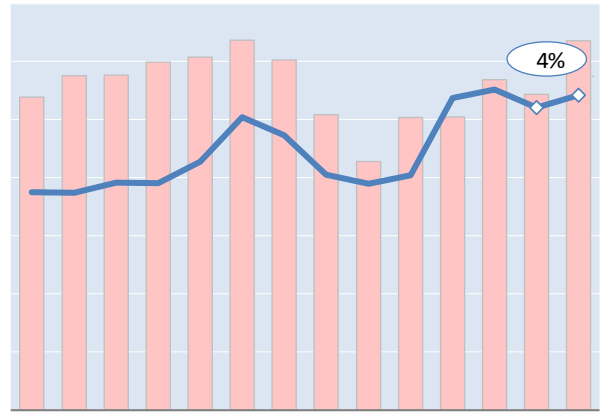
█ Chargeable weight development

Worldwide



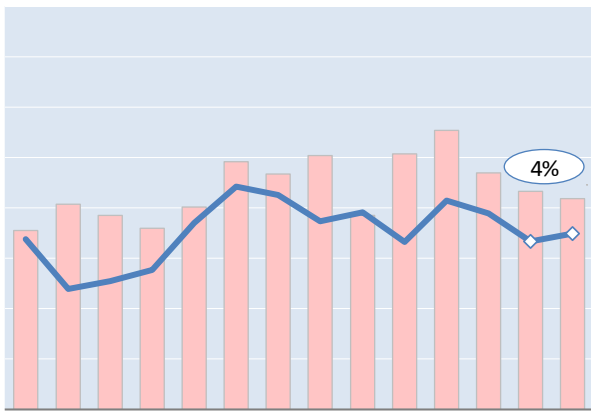
Jun '20 = \$3.11 Jun '21 = \$3.24 Jul '21 = \$3.26

Hong Kong to USA



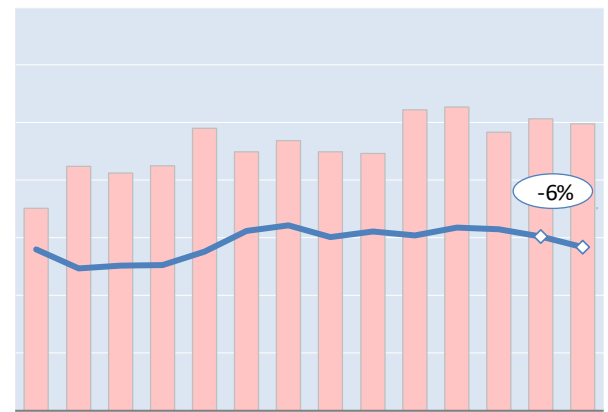
Jun '20 = \$4.82 Jun '21 = \$6.70 Jul '21 = \$6.97

Shanghai to Germany



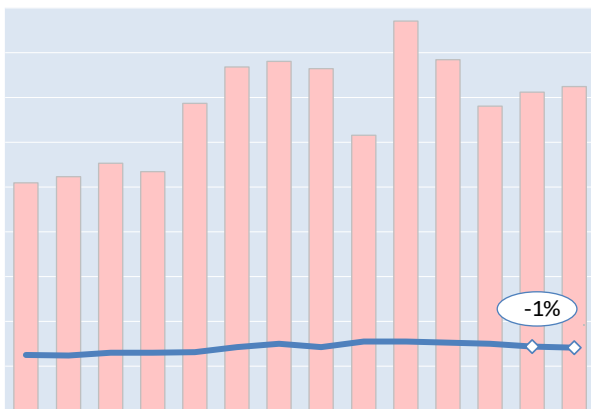
Jun '20 = \$4.23 Jun '21 = \$4.17 Jul '21 = \$4.36

Amsterdam to USA



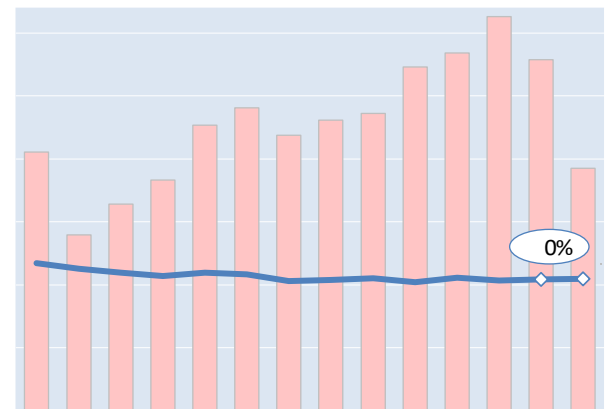
Jun '20 = \$3.60 Jun '21 = \$3.88 Jul '21 = \$3.64

Frankfurt to China



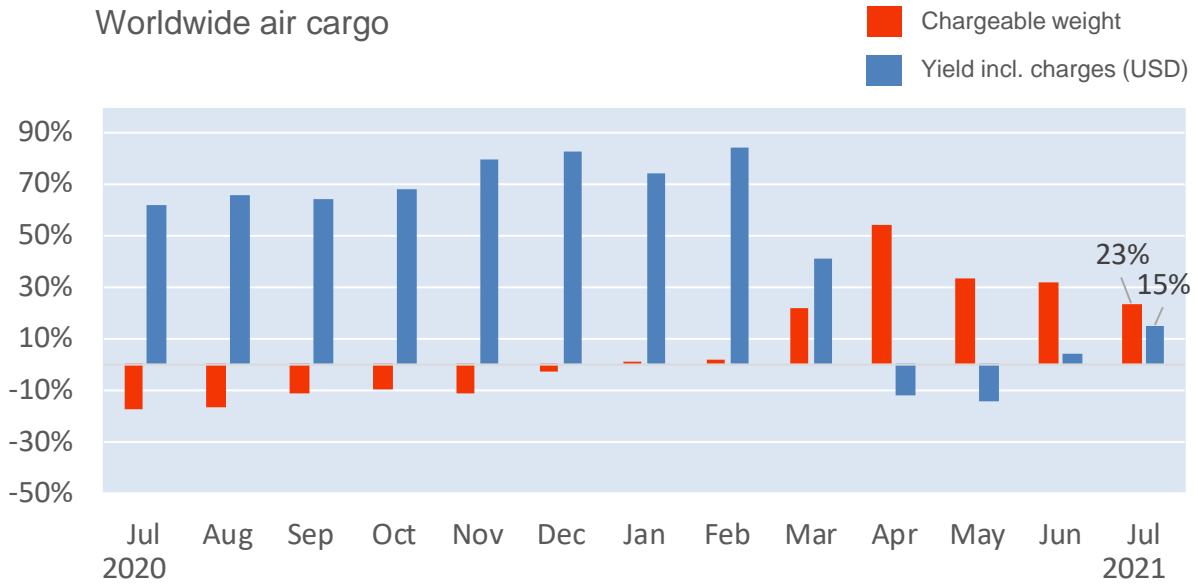
Jun '20 = \$1.25 Jun '21 = \$1.43 Jul '21 = \$1.41

Mumbai to UK



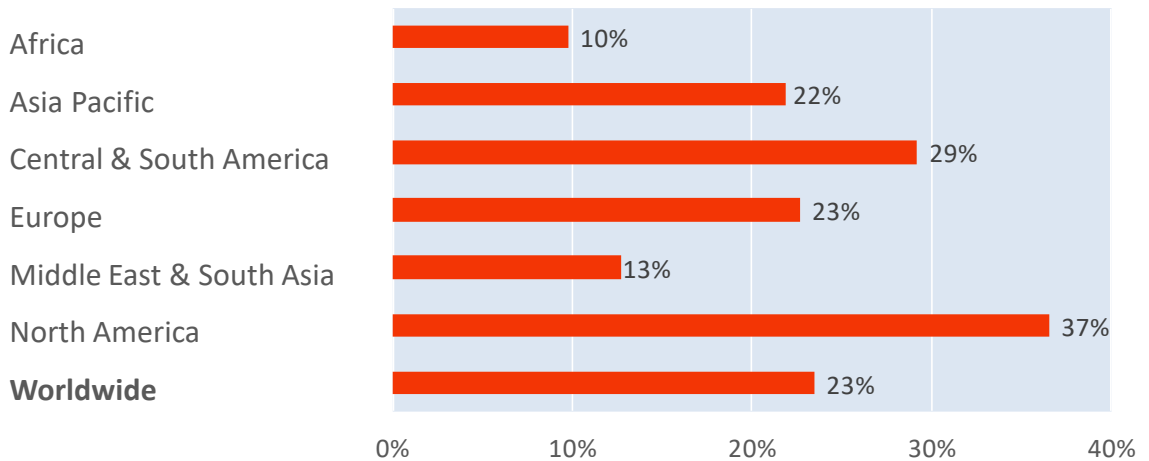
Jun '20 = \$3.30 Jun '21 = \$2.94 Jul '21 = \$2.95

Monthly Change Year-on-Year - Weight and Yield



Monthly Change Year-on-Year – Weight per Origin Region

Chargeable weight (July 2021)



Monthly Change Year-on-Year – Weight per Product Category

Chargeable weight (July 2021)

