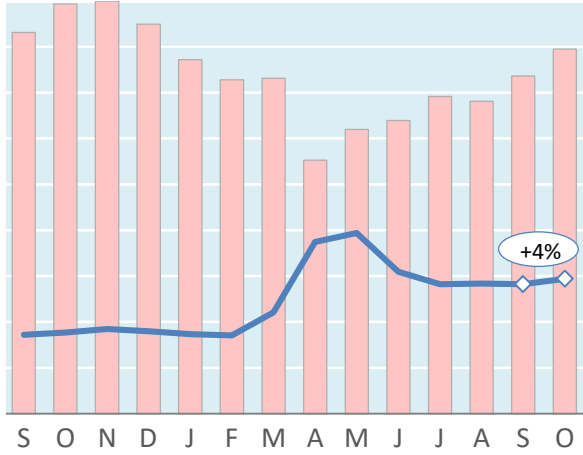


Actual Yields against Volume Development

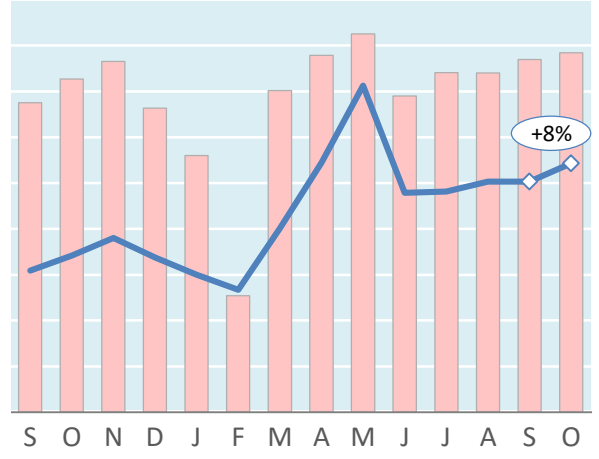
Latest 14 months — Actual yield including charges (in USD) Chargeable weight development

Worldwide



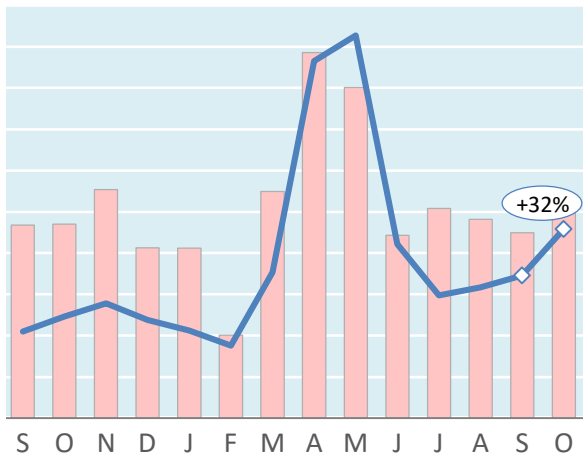
Sep '19 = \$1.72 Sep '20 = \$2.82 Oct '20 = \$2.94

Hong Kong to USA



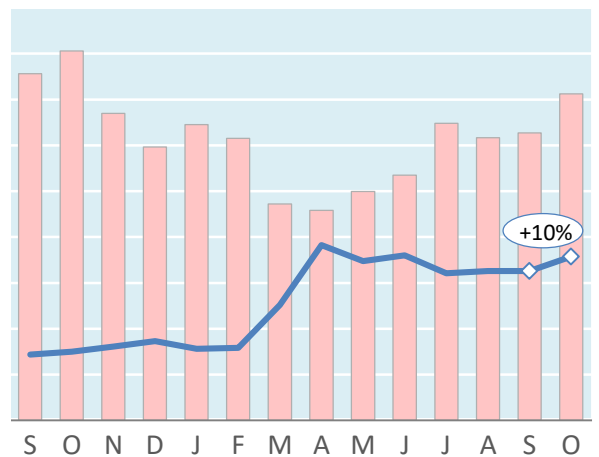
Sep '19 = \$3.09 Sep '20 = \$5.03 Oct '20 = \$5.43

Shanghai to Germany



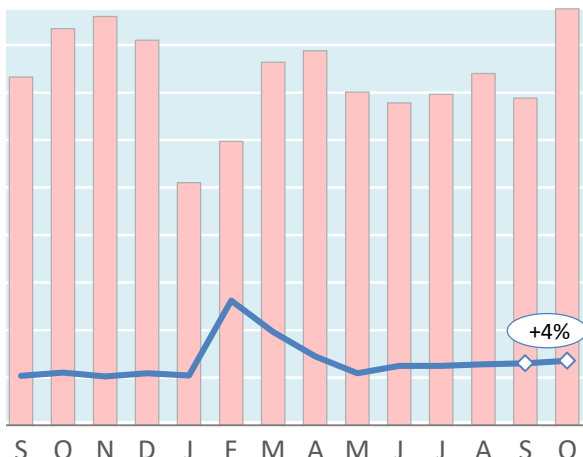
Sep '19 = \$2.10 Sep '20 = \$3.46 Oct '20 = \$4.58

Amsterdam to USA



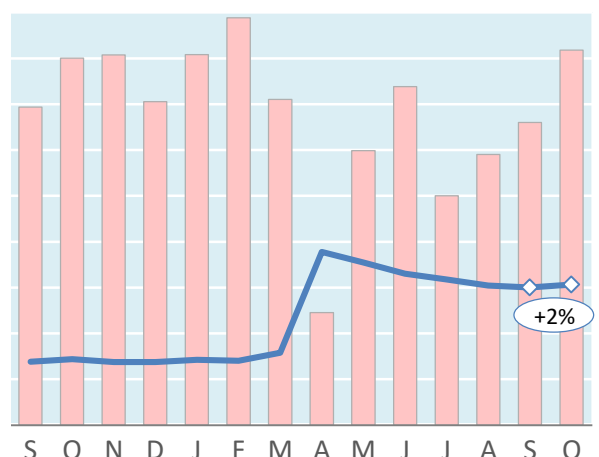
Sep '19 = \$1.44 Sep '20 = \$3.26 Oct '20 = \$3.58

Frankfurt to China



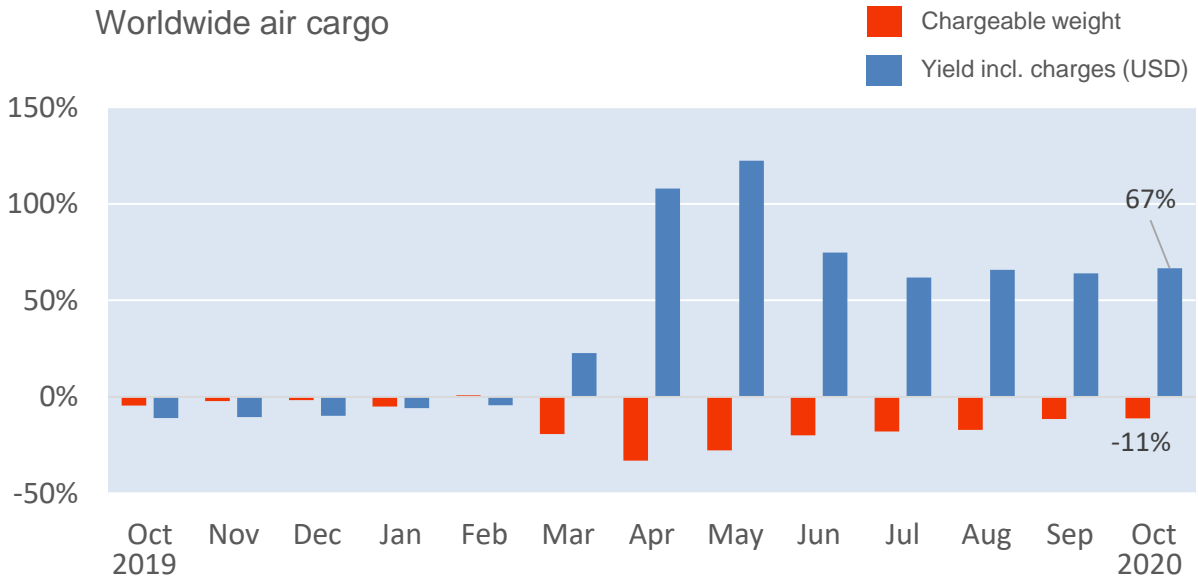
Sep '19 = \$1.04 Sep '20 = \$1.30 Oct '20 = \$1.36

Mumbai to UK



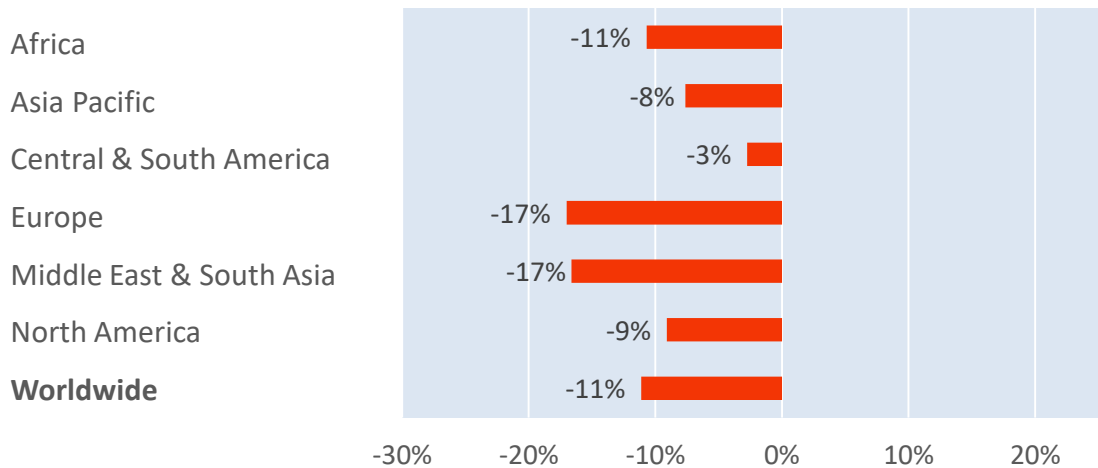
Sep '19 = \$1.38 Sep '20 = \$3.00 Oct '20 = \$3.06

Monthly Change Year-on-Year - Weight and Yield



Monthly Change Year-on-Year – Weight per Origin Region

Chargeable weight (October 2020)



Monthly Change Year-on-Year – Weight per Product Category

Chargeable weight (October 2020)

