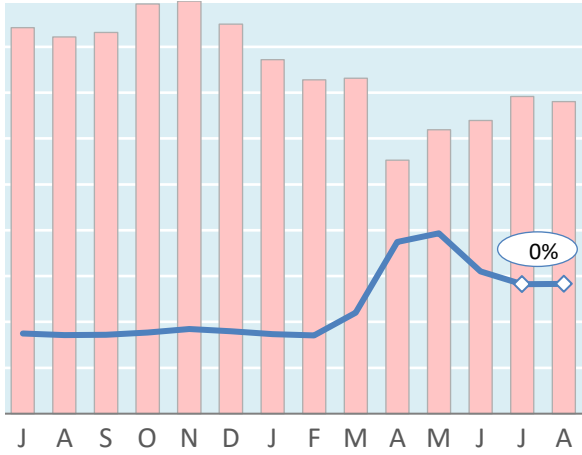


## Actual Yields against Volume Development

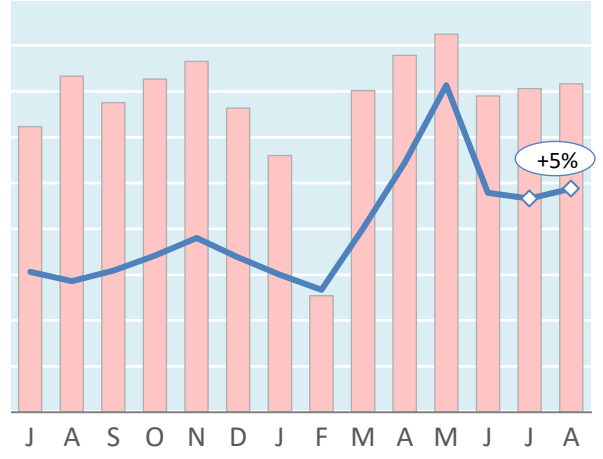
Latest 14 months — Actual yield including charges (in USD) ■ Chargeable weight development

### Worldwide



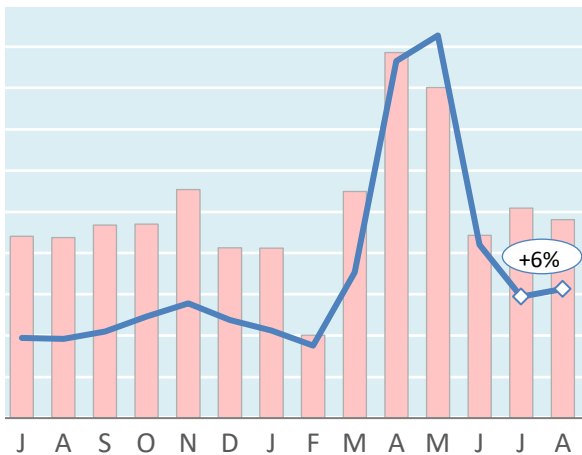
Jul '19 = \$1.75 Jul '20 = \$2.83 Aug '20 = \$2.83

### Hong Kong to USA



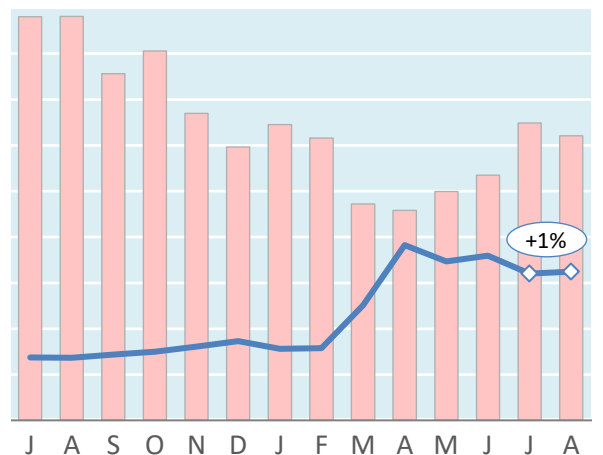
Jul '19 = \$3.06 Jul '20 = \$4.66 Aug '20 = \$4.88

### Shanghai to Germany



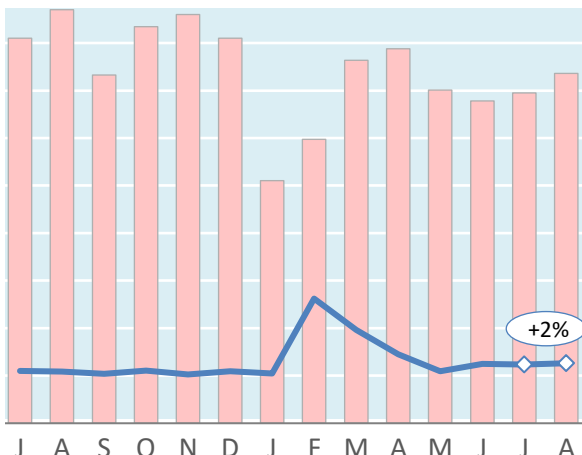
Jul '19 = \$1.94 Jul '20 = \$2.95 Aug '20 = \$3.13

### Amsterdam to USA



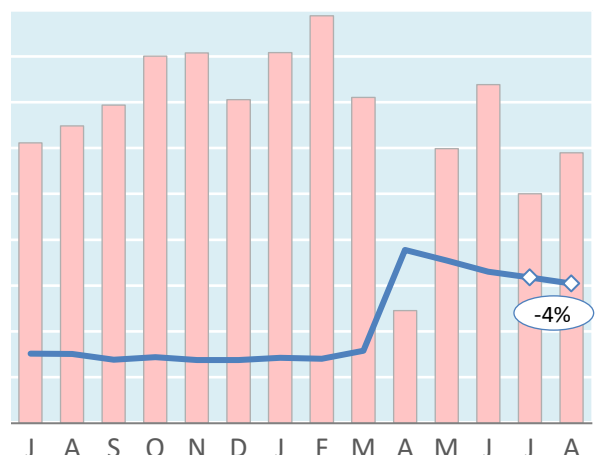
Jul '19 = \$1.37 Jul '20 = \$3.20 Aug '20 = \$3.25

### Frankfurt to China



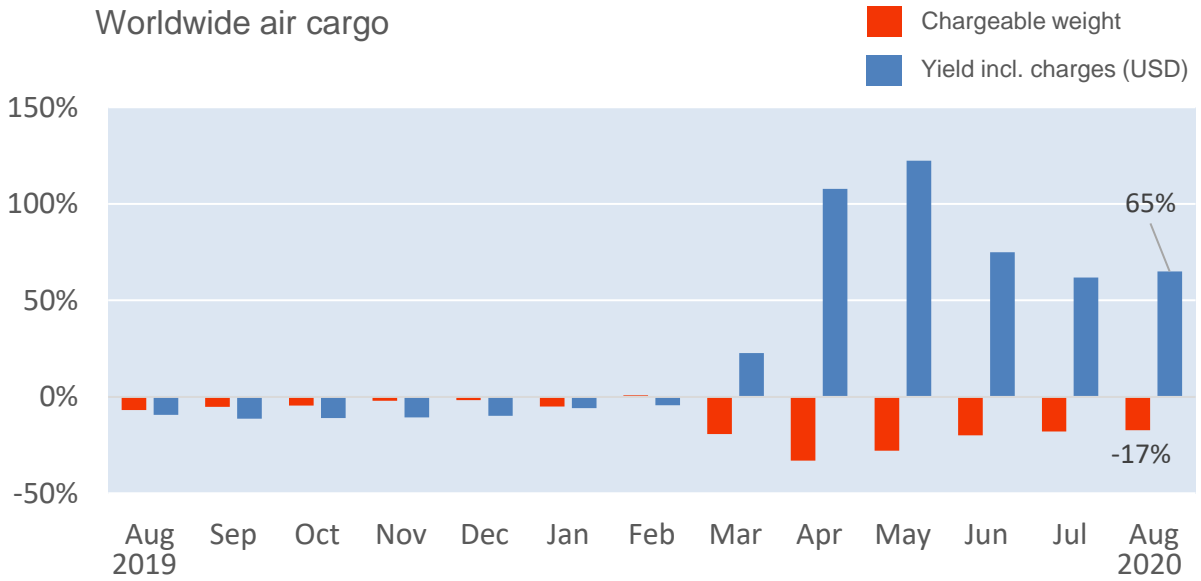
Jul '19 = \$1.10 Jul '20 = \$1.23 Aug '20 = \$1.26

### Mumbai to UK



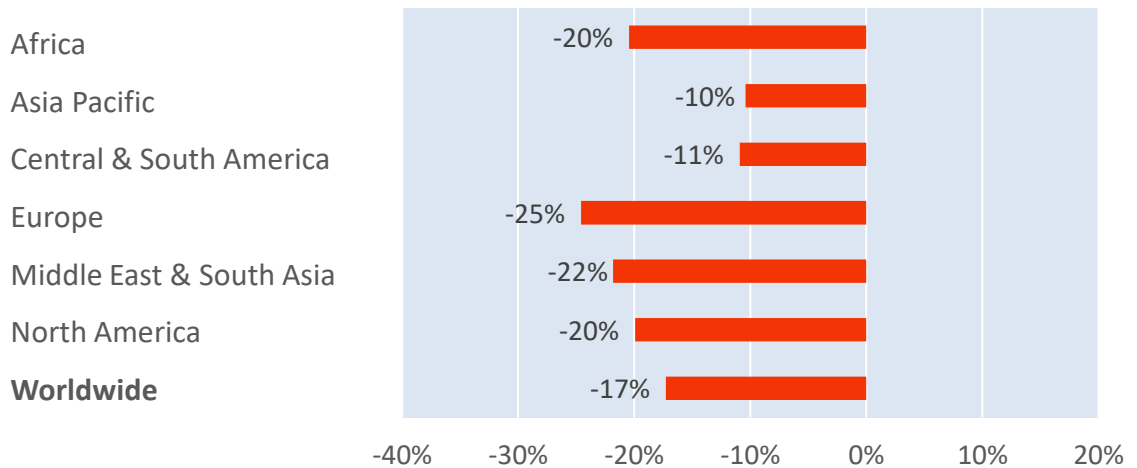
Jul '19 = \$1.52 Jul '20 = \$3.17 Aug '20 = \$3.04

Monthly Change Year-on-Year - Weight and Yield



Monthly Change Year-on-Year – Weight per Origin Region

Chargeable weight (August 2020)



Monthly Change Year-on-Year – Weight per Product Category

Chargeable weight (August 2020)

